

School Academy

# DREAM. BUILD. LEARN.

# RENAISSANCE REPORT

February 13, 2026

## #RAMSPRIDE

It was a great week of learning at RPSA and we had a lot of fun wrapping things up with Kindness and Valentine's Parties today. We will be keeping the fun going with a spirit week next week planned by our 5th-8<sup>th</sup> grade Student Government. Check out the flyer below!

There are two great family events coming up this month - thank you Parent Club for giving us such great options! Check out the flyers below for a dine-out fundraiser and a great family event that is being put together in collaboration with our Middle School Chief Science Officers. We hope to see you there!

## IMPORTANT TO DOS:

- Check Seesaw for updates from your child's teacher
- Return your Re-Enrollment Forms to the front office

## UPCOMING EVENTS

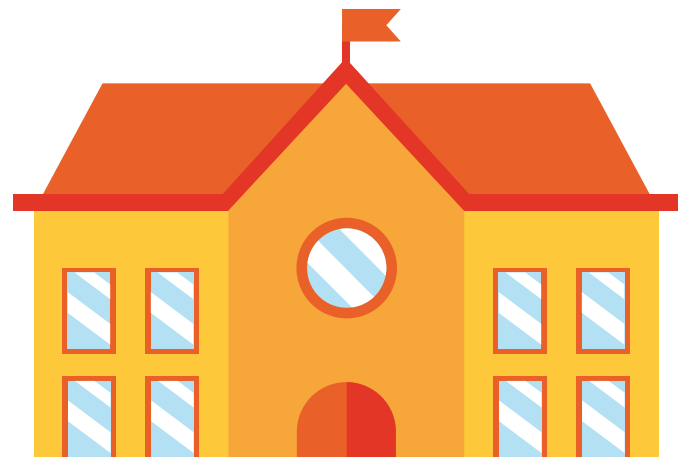
- Spirit Week Hosted by Student Government
- February 19th - Dine-Out Event at IHop
- February 28<sup>th</sup> - Winter Craft Day
- March 26th - Student Led Conferences
- March 27th - April 3rd - Spring Break

## SCHOOL DAY HOURS

- 7:40am: School Doors Open
- 8:00am: School Day Begins
- 3:25pm: Dismissal
  - Wednesday 2:00pm Dismissal



Renaissance Academy  
**RAMS**



# #RAMSPRIDE



Be Safe Be Responsible

Be Kind Work Hard

We love celebrating our students when they're caught showing RAMS Pride. We look for students who are being safe, being responsible, being kind, or working hard and try to highlight them with a "Shout Out". Students receive a blue paper to bring home and show off to their families. Their names are also included in the weekly newsletter. The first time a student receives a shout out, they get to visit the book vending machine too!

We're excited to celebrate these amazing students who received a Shout Out this week!

- Jon K.
- Justis P.
- Cam D.
- Gwendolyn S.
- Cara B.
- Elizabeth F.
- Kavon T.
- Hawthorne W.
- Stella R.
- Asiianah B.
- Peyton H.
- Karter M.
- Ben L.
- Madison L.
- Mitchell J.
- Ryan T.
- Ruth M.
- Eleanor M.
- Landyn L.
- Goe C.

Valentine's Week Spirit Week!

Feb 16th-20th

monday

Pajama day! rock your snuggliest pjs!



tuesday

Topsy-turvy, inside-out day!

wednesday

Rock your Rams Swag

thursday

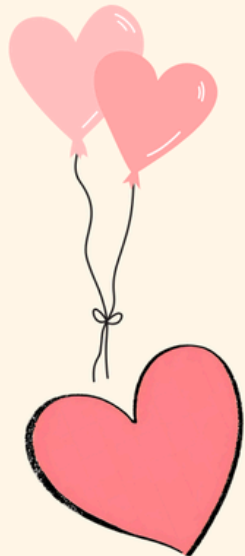
Valentine's Day colors  
: think pink, red, and a  
whole lotta hearts!



friday

Pod colors each pod  
will have a different  
color

k- yellow  
1st/2<sup>nd</sup> orange  
3rd/4<sup>th</sup> green  
5th/6<sup>th</sup> blue  
middle school  
white





# It's Re-enrollment Time!

Re-enrollment forms came home last week. Extra copies are available at the office.

All forms are due back by February 16, 2026 to save your spot for next school year.

# RE-ENROLLMENT FORM

THIS FORM MUST BE RETURNED BY **FEBRUARY 16** TO GUARANTEE YOUR CHILD'S RETURN TO THE ACADEMY IN THE FALL OF 2026

**YES!** My child/children **WILL** be returning:

List each child

1.	4.
2.	5.
3.	6.

## NEW SIBLING ENROLLMENT:

Name: \_\_\_\_\_ Grade for Fall 2026: \_\_\_\_\_

Name: \_\_\_\_\_ Grade for Fall 2026: \_\_\_\_\_

**DECLINING:** My child/children **WILL NOT** be returning:

1.	4.
2.	5.
3.	6.

Parent Signature: \_\_\_\_\_ Date: \_\_\_\_\_

Reason for Decline:

\_\_\_\_\_

# DINE OUT FUNDRAISER

7am Thursday  
February 19th Through  
Friday the 20th at 4am

Let IHOP feed your family  
while you support our school



Sponsored by Rams Parent Club. 20% of sales go to the school.  
Must have a paper flyer at time of dining

## ATHLETICS

# Competition Cheer Team Awards Event

March 3, 2026

Maker Space (Cafeteria) 6:00 to 7:15pm

Dinner will not be provided; however, we will be serving ice cream with fabulous topping options!

Cheer Team and their families are invited to attend for an evening of celebration - as we honor our season accomplishments! Uniforms should be turned in at or before this event. Thank you.



# Winter Craft Day!

COME JOIN OUR CHIEF SCIENCE OFFICERS AND OUR PARENT CLUB FOR A FUN CRAFT DAY.

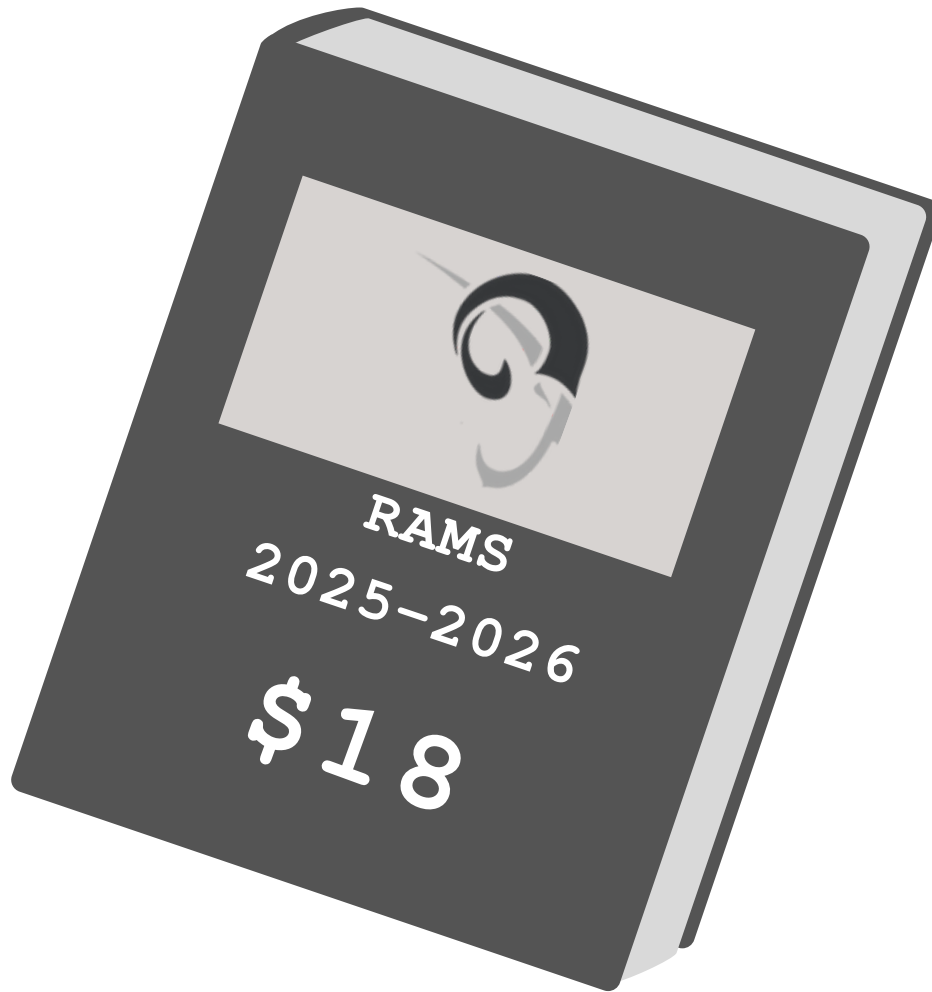
THIS EVENT WILL INCLUDE MANY FUN WINTER CRAFTS AND A HOT COCOA BAR!

PLEASE JOIN US ON FEBRUARY 28TH FROM 11-1 AT RPSA!

PLEASE RSVP  
USING THIS  
LINK



# RPSA 2025-2026 YEARBOOK



LAST DAY TO ORDER IS  
THURSDAY, MARCH 26TH.

STUDENT NAME \_\_\_\_\_

TEACHER \_\_\_\_\_

QUANTITY \_\_\_\_\_

Cash or check can be made out to "RPSA" and can be brought to your teacher or the front office.





**CALL TO SIGN UP TODAY!**



# Kindergarten Enrollment Night

**March 9, 2026, 5:30pm**

Join us for an informational night and glimpse into Kindergarten programming at Renaissance Public School Academy, where personalized instruction is provided in an active, engaging learning environment for all students.



Connection and Relationship Driven



Project Based Learning



Student Voice and Choice

Contact Us >>>

989-773-9889

www.renaissancepsa.com





# Little Rams Preschool

Enrollment has opened for the 2026-2027 school year for our GRSP 4-year-old preschool classroom. Renaissance Public School Academy is a Project Based Learning school for pre-K through 8<sup>th</sup> grade students. We prioritize student connections, voice and choice, and inquiry and would love to have your child become part of our school community.

- Reggio Emilio inspired approach ✓
- Play a nature based learning ✓
- 5 full days weekly ✓

**FOR MORE INFORMATION**

[www.miearlychildhood.org](http://www.miearlychildhood.org)   
[www.renaissancepsa.com](http://www.renaissancepsa.com) 





	2/16/26	2/17/26	2/18/26	2/19/26	2/20/26
<b>Breakfast</b>	Cereal  Strawberries Fruit Juice Milk	Cinnamon Cream Cheese Bagel Frozen Sorbert Fruit Juice Milk	Cereal  Fruit juice Apple Sauce Milk	Cereal  Apples Fruit Juice Milk	Powdered Donuts  Berry Sorbert Apple Sauce Milk
<b>Lunch</b>	Quesadillas Salsa  Peaches Milk  or Chicken Salad	Teryaki Bites Dinner Roll Carrots Mandarin Oranges Milk  or Chicken Salad	Dominos Pepperoni Pizza Broccoli Vegetable Juice Fruit Cup Milk  or Chicken Salad	Walking Tacos Refried Beans Peaches Milk  or Chicken Salad	Bosco Sticks Marinara Celery Peaches Milk  or Chicken Salad

Choice of White or Chocolate Milk Served Daily

USDA Nondiscrimination Statement In accordance with federal civil rights law and U.S. Department of Agriculture (USDA) civil rights regulations and policies, this institution is prohibited from discriminating on the basis of race, color, national origin, sex (including gender identity and sexual orientation), disability, age, or reprisal or retaliation for prior civil rights activity. Program information may be made available in languages other than English. Persons with disabilities who require alternative means of communication to obtain program information (e.g., Braille, large print, audiotape, American Sign Language), should contact the responsible state or local agency that administers the program or USDA's TARGET Center at (202) 720-2600 (voice and TTY) or contact USDA through the Federal Relay Service at (800) 877-8339. To file a program discrimination complaint, a Complainant should complete a Form AD-3027, USDA Program Discrimination Complaint Form which can be obtained online at: USDA Program Discrimination Complaint Form, from any USDA office, by calling (866) 632-9992, or by writing a letter addressed to USDA. The letter must contain the complainant's name, address, telephone number, and a written description of the alleged discriminatory action in sufficient detail to inform the Assistant Secretary for Civil Rights (ASCR) about the nature and date of an alleged civil rights violation. The completed AD-3027 form or letter must be submitted to USDA by:

Mail U. S. Department of Agriculture Office of the Assistant Secretary for Civil Rights, 1400 Independence Avenue, SW Washington, D.C. 20250-9410 or Fax (202) 266-1866 or (202) 690-7442 or Email [Program.intake@usda.gov](mailto:Program.intake@usda.gov)

## Renaissance PSA 2025-2026 Calendar

Su	M	Tu	W	Th	F	Sa
					1	2
3	4	5	6	7	8	9
10	11	12	13	14	15	16
17	18	19	20	21	22	23
24	25	26	27	28	29	30
31						

Su	M	Tu	W	Th	F	Sa
	1	2	3	4	5	6
7	8	9	10	11	12	13
14	15	16	17	18	19	20
21	22	23	24	25	26	27
28	29	30				

Su	M	Tu	W	Th	F	Sa
			1	2	3	4
5	6	7	8	9	10	11
12	13	14	15	16	17	18
19	20	21	22	23	24	25
26	27	28	29	30	31	

First & Last Day
PD Days: No School for Students
No School for Students and Staff
SLCs - No School for Students
Family Visits

Su	M	Tu	W	Th	F	Sa
						1
2	3	4	5	6	7	8
9	10	11	12	13	14	15
16	17	18	19	20	21	22
23	24	25	26	27	28	29
30						

Su	M	Tu	W	Th	F	Sa
	1	2	3	4	5	6
7	8	9	10	11	12	13
14	15	16	17	18	19	20
21	22	23	24	25	26	27
28	29	30	31			

Su	M	Tu	W	Th	F	Sa
				1	2	3
4	5	6	7	8	9	10
11	12	13	14	15	16	17
18	19	20	21	22	23	24
25	26	27	28	29	30	31

M, Tu, Th, F Daily Schedule:  
8:00 a.m. - 3:25 p.m.

Wednesday Early Release:  
8:00 a.m. - 2:00 p.m.

Su	M	Tu	W	Th	F	Sa
1	2	3	4	5	6	7
8	9	10	11	12	13	14
15	16	17	18	19	20	21
22	23	24	25	26	27	28

Su	M	Tu	W	Th	F	Sa
1	2	3	4	5	6	7
8	9	10	11	12	13	14
15	16	17	18	19	20	21
22	23	24	25	26	27	28
29	30	31				

Su	M	Tu	W	Th	F	Sa
			1	2	3	4
5	6	7	8	9	10	11
12	13	14	15	16	17	18
19	20	21	22	23	24	25
26	27	28	29	30		

Su	M	Tu	W	Th	F	Sa
					1	2
3	4	5	6	7	8	9
10	11	12	13	14	15	16
17	18	19	20	21	22	23
24	25	26	27	28	29	30
31						

Su	M	Tu	W	Th	F	Sa
	1	2	3	4	5	6
7	8	9	10	11	12	13
14	15	16	17	18	19	20
21	22	23	24	25	26	27
28	29	30				

Su	M	Tu	W	Th	F	Sa
			1	2	3	4
5	6	7	8	9	10	11
12	13	14	15	16	17	18
19	20	21	22	23	24	25
26	27	28	29	30	31	