

**MAY 10, 2024**

# RAMS RECAP

*Renaissance Public School Academy Newsletter*



*Renaissance Academy*

# RAMS

## UPCOMING EVENTS

**Hoop House Day!**

**May 16, 2024**

**PTO Walk-a-Thon**

**May 23, 2024**

**No School**

**May 24 & 27, 2024**

**Blaze Pizza PTO  
Fundraiser**

**May 28, 2024**



Hello RPSA Families!

There are some amazing things happening at RPSA right now! Check it out:

- Kindergarteners have done such a great job growing tomatoes, they have plants to give away! See the flyer below
- Voyagers have launched their last project of the year and would like to raise funds to meet the needs of students across the world. Check out the flyer for their Pop Can Drive!
- The Hoop House build day is fast approaching and we are so excited! There is still time to volunteer if you'd like to help - email Mrs. Nix
- Next week is Charter Schools Week! We're celebrating with a Rams Pride day on Thursday
- The PTO Walk-a-Thon event is returning in a couple of weeks. Fundraising flyers came home with each student this week. Our kids are so excited for this fun day to return!

We love that our students and staff continue to do amazing things and have a blast while learning all the way to the end of the school year. RPSA rocks!

With RAMS Pride,  
The RPSA Leadership Team

# Student Shout Outs

- Jensen P.
- Grady D.
- Laytin S.
- Phoenix C.
- Kayden H.
- Ramie M.
- Lauren O.
- Evelyn R.
- Sloane C.
- Ezra P.
- Aubrey Q.
- Eli H.
- Lucy C.
- Sovie K-M
- Daniel M.
- Steven F.

**#RAMSPRIDE**



# **RAMS PRIDE DAY!**

**TO CELEBRATE CHARTER  
SCHOOLS WEEK AND OUR  
COMMUNITY BUILD!**

**Thursday,  
May 16th**



**\$3 per dozen**  
while supplies last!

# FRESH EGGS FOR SALE!



Laid by  
chickens from  
Renaissance.  
Now available  
to purchase by  
the coop.



To purchase eggs,  
please park and walk  
up to the chicken coop.  
Eggs will be available  
to purchase every  
Friday.





# POP CAN DRIVE

*Help the Voyagers raise money to  
put water filters in classrooms in  
Laos!*

*Bring pop cans to school until the  
end of May. Please place them in  
the container near the front of  
the school!*

You can send in bottle slips as well!

# Free Tomato Plants!

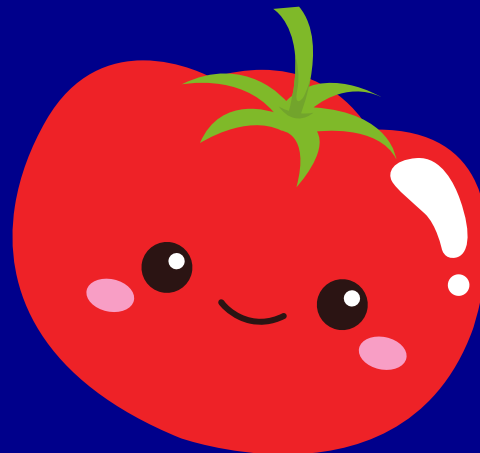
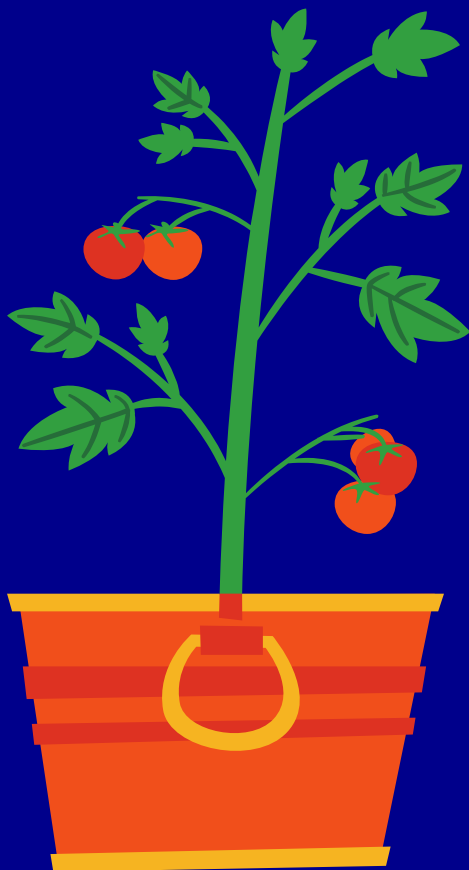
Our Kindergarten students have extra potted tomato plants that they have potted, planted, and cared for from their life science unit!

They will be giving these away for free on the day of the Hoop House community build!

While supplies last!

3 Different Types!

Located near the Hoop House build all day on May 16th!





Renaissance Academy

**RAMS**

*Next*

## PTO MEETING

May 20, 2024 

3:45 PM 

Renaissance Public  
School Academy\* 

- Walk-A-Thon Volunteers
- Last round of mini grant reviews
- Year end wrap up

Renaissance Academy

**RAMS**

April

## PTO MEETING

*Wrap Up*

- Approved just over \$2,000 in mini grant requests for teachers and staff that will support playground toys, a kindergarten farm science experience, genius hour projects, reading curriculum materials and an evidence-based language curriculum for children on the Autism spectrum.
- Staff Appreciation Luncheon sponsored by PTO on May 8, 2024 from Vin Trofeo's
- Walk-A-Thon planning continued

# 4TH ANNUAL PTO WALK-A-THON

Renaissance Academy  
**RAMS**



## MAY 23, 2024

# THANK YOU

TO OUR 2024 RPSA WALK-A-THON SPONSORS

### PLATINUM

Mt. Pleasant Martial Arts  
Crossfit Worthy  
Modern Woodmen  
Sally Rudy Photography  
Isabella Community Credit Union  
Mercantile Bank  
Members First Credit Union  
Krapohl Ford

### SILVER

The Painted Turtle  
Three Oaks Therapeutics  
Celebration Cinema  
Central Michigan Orthodontics  
Isabella Bank  
Keller Williams Realty  
Wiefrich Financial  
Doozie's

### BRONZE

Sleepy Dog Books  
The Golf Center  
The Jump Station  
Mt. Pleasant Discovery Museum  
Pisanello's  
Riverwood  
Morey Gymnastics Center  
Barberi Law Firm  
Valhalla Axe Throwing  
Art Reach of MidMichigan  
Starbucks (M-20/Pickard)







**EAT SOME PIZZA,  
RAISE SOME DOUGH!**



Download Our  
Mobile App!

Enjoy yourself and support our cause at a special fundraising event for:

## Renaissance Academy PTO

**BLAZE PIZZA WILL DONATE 20% OF PROCEEDS FROM YOUR ORDER BACK TO THIS ORGANIZATION!**

- Date:** Tuesday, May 28, 2024
- Time:** 11:00 am – 9:00 pm
- Location:** 1218 South Mission Street, Mt. Pleasant
- Order Method:**

**In Restaurant:** Present this flyer or show a copy of it on your phone before paying. **FUND A**

**Online & App Orders:** Orders must be placed online at [blazepizza.com](http://blazepizza.com) or through the Blaze Pizza app. Enter **1358A** into the "Coupon Code" field at checkout to have your transaction count toward the fundraiser. If entered correctly, you'll see a \$.01 discount applied to your check which confirms that 20% of your transaction will be counted into the total donation. **VALID FOR PICKUP, CARRYOUT AND CURBSIDE & DELIVERY WHERE AVAILABLE.**

**VALID FOR DINE-IN, PICK-UP AND DELIVERY AND CURBSIDE WHERE AVAILABLE THROUGH THE BLAZE PIZZA APP & WEBSITE.** For online orders, only transactions that have the promo code applied during the time and date specified above will be counted toward the donation total. Donation amount excludes proceeds from tax and giftcard purchases. Excludes 3rd party delivery and phone orders. **FLYER DISTRIBUTION IN-RESTAURANT PROHIBITED**



# FREE School Sports Physicals For School Year 2024-25



Sports physicals performed anytime after April 15 are valid for the entire following school year. **Don't wait until practices begin to get your child's physical.** Beat the last-minute rush with these **FREE** walk-in school sports physicals in multiple convenient locations. Bring your completed MHSAA form, signed by a parent or guardian. **Minors must be accompanied by a parent or guardian.**

If your child has existing medical conditions or is seeing a specialist, you will also need clearance from their physician. We recommend you begin this process as soon after April 15 as possible and well before the first scheduled practice to allow for any additional appointments or testing that may be required.

## Alma

**Mon., June 17 • 3 - 5 p.m.**

*Family Practice Center Alma*  
330 E. Warwick Drive

## Clare

**Wed., May 29 & Mon., June 3  
5:30 - 7:30 p.m.**

*MyMichigan Medical Offices Clare*  
602 Beech Street, Suites 2200 and 2240

## Gladwin

**Thurs., June 20 • 4 - 7 p.m.**

*MyMichigan Health Park Gladwin*  
1105 Cedar Avenue

## Harrison

**Wed., June 5 • 4 - 7 p.m.**

*MyMichigan Health Park Harrison*  
815 N. Clare Avenue, Suite A

## Shepherd

**Thurs., May 30 • 3:30 - 6 p.m.**

*MyMichigan Family Medicine*  
364 W. Wright Street

## West Branch

**Thurs., June 6 & Fri., June 7  
4 - 8 p.m.**

*MyMichigan Health Park West Branch*  
335 E. Houghton Avenue

## *Your Primary Care Provider is Your Partner In Good Health*

Your best care is achieved through your personal primary care provider. We encourage you to have yearly wellness exams through your own primary care provider, and in many cases, you can complete your sports physical at the same time as your yearly visit. We offer these clinics as additional options for students whose wellness exam falls outside the window for participation in sports.

If you are unable to attend on these dates, we recommend that you contact your primary care provider to arrange a sports physical. If you do not have a primary care provider, we are welcoming new patients in multiple locations, and would be happy to schedule a new patient visit. For help finding a primary care provider, call MyMichigan Health Line (800) 999-3199.



# May Breakfast Menu

WEDNESDAY 01

THURSDAY 02

Friday 03

Cinnamon Pull  
aparts  
Fruit  
Milk

Yogurt  
Granola Bar  
Fruit  
Milk

Donuts  
Fruit  
Milk

MONDAY 06

TUESDAY 07

WEDNESDAY 08

THURSDAY 09

FRIDAY 10

Poptart  
Graham Crackers  
Fruit  
Milk

Cereal  
Graham Crackers  
Fruit  
Milk

Cinnamon Pull  
aparts  
Fruit  
Milk

Yogurt  
Granola Bar  
Fruit  
Milk

Donuts  
Fruit  
Milk

MONDAY 13

TUESDAY 14

WEDNESDAY 15

THURSDAY 16

FRIDAY 17

Poptart  
Graham Crackers  
Fruit  
Milk

Cereal  
Graham Crackers  
Fruit  
Milk

Cinnamon Pull  
aparts  
Fruit  
Milk

Yogurt  
Granola Bar  
Fruit  
Milk

Donuts  
Fruit  
Milk

MONDAY 20

TUESDAY 21

WEDNESDAY 22

THURSDAY 23

FRIDAY 24

Poptart  
Graham Crackers  
Fruit  
Milk

Cereal  
Graham Crackers  
Fruit  
Milk

Cinnamon Pull  
aparts  
Fruit  
Milk

Yogurt  
Granola Bar  
Fruit  
Milk

NO SCHOOL

MONDAY 27

TUESDAY 28

WEDNESDAY 29

THURSDAY 30

FRIDAY 31

NO SCHOOL

Cereal  
Graham Crackers  
Fruit  
Milk

Cinnamon Pull  
aparts  
Fruit  
Milk

Yogurt  
Granola Bar  
Fruit  
Milk

Donuts  
Fruit  
Milk



# May Lunch Menu

WEDNESDAY 01

THURSDAY 02

FRIDAY 03

Cold Option:  
Salad with Chicken,  
Veggies, Croutons,  
Cheese, and Ranch

Pepperoni  
Pizza  
Baby Carrots  
Fruit  
Milk

Chicken Patty  
on a bun  
Fresh Broccoli  
Fruit  
Milk

Mini Corndogs  
Beans  
Fruit  
Milk

MONDAY 06

TUESDAY 07

WEDNESDAY 08

THURSDAY 09

FRIDAY 10

Taco Pizza  
bites  
w/salsa  
Sour Cream  
Fruit  
Milk

Belgian Waffle  
w/ Sausage  
Hashbrowns  
Fruit  
Milk

Cheese Pizza  
Baby Carrots  
Fruit  
Milk

Chicken Patty  
on a bun  
Fresh Broccoli  
Fruit  
Milk

Mini Corndogs  
Beans  
Fruit  
Milk

MONDAY 13

TUESDAY 14

WEDNESDAY 15

THURSDAY 16

FRIDAY 17

Taco Pizza  
bites  
w/salsa  
Sour Cream  
Fruit  
Milk

Belgian Waffle  
w/ Sausage  
Hashbrowns  
Fruit  
Milk

Pepperoni  
Pizza  
Baby Carrots  
Fruit  
Milk

Chicken Patty  
on a bun  
Fresh Broccoli  
Fruit  
Milk

Mini Corndogs  
Beans  
Fruit  
Milk

MONDAY 20

TUESDAY 21

WEDNESDAY 22

THURSDAY 23

FRIDAY 24

Taco Pizza  
bites  
w/salsa  
Sour Cream  
Fruit  
Milk

Belgian Waffle  
w/ Sausage  
Hashbrowns  
Fruit  
Milk

Cheese Pizza  
Baby Carrots  
Fruit  
Milk

Chicken Patty  
on a bun  
Fresh Broccoli  
Fruit  
Milk

NO SCHOOL

MONDAY 27

TUESDAY 28

WEDNESDAY 29

THURSDAY 30

FRIDAY 31

NO SCHOOL

Belgian Waffle  
w/ Sausage  
Hashbrowns  
Fruit  
Milk

Pepperoni  
Pizza  
Baby Carrots  
Fruit  
Milk

Chicken Patty  
on a bun  
Fresh Broccoli  
Fruit  
Milk

Mini Corndogs  
Beans  
Fruit  
Milk

# Renaissance PSA 2023-2024 Calendar

August '23						
M	Tu	W	Th	F	Sa	
	1	2	3	4	5	
7	8	9	10	11	12	
14	15	16	17	18	19	
21	22	23	24	25	26	
28	29	30	31			

September '23						
Su	M	Tu	W	Th	F	Sa
					1	2
3	4	5	6	7	8	9
10	11	12	13	14	15	16
17	18	19	20	21	22	23
24	25	26	27	28	29	30

October '23						
Su	M	Tu	W	Th	F	Sa
1	2	3	4	5	6	7
8	9	10	11	12	13	14
15	16	17	18	19	20	21
22	23	24	25	26	27	28
29	30	31				

November '23						
M	Tu	W	Th	F	Sa	
		1	2	3	4	
6	7	8	9	10	11	
13	14	15	16	17	18	
20	21	22	23	24	25	
27	28	29	30			

December '23						
Su	M	Tu	W	Th	F	Sa
					1	2
3	4	5	6	7	8	9
10	11	12	13	14	15	16
17	18	19	20	21	22	23
24	25	26	27	28	29	30
31						

January '24						
Su	M	Tu	W	Th	F	Sa
	1	2	3	4	5	6
7	8	9	10	11	12	13
14	15	16	17	18	19	20
21	22	23	24	25	26	27
28	29	30	31			

February '24						
M	Tu	W	Th	F	Sa	
			1	2	3	
5	6	7	8	9	10	
12	13	14	15	16	17	
19	20	21	22	23	24	
26	27	28	29			

March '24						
Su	M	Tu	W	Th	F	Sa
					1	2
3	4	5	6	7	8	9
10	11	12	13	14	15	16
17	18	19	20	21	22	23
24	25	26	27	28	29	30
31						

April '24						
Su	M	Tu	W	Th	F	Sa
	1	2	3	4	5	6
7	8	9	10	11	12	13
14	15	16	17	18	19	20
21	22	23	24	25	26	27
28	29	30				

May '24						
M	Tu	W	Th	F	Sa	
		1	2	3	4	
6	7	8	9	10	11	
13	14	15	16	17	18	
20	21	22	23	24	25	
27	28	29	30	31		

June '24						
Su	M	Tu	W	Th	F	Sa
						1
2	3	4	5	6	7	8
9	10	11	12	13	14	15
16	17	18	19	20	21	22
23	24	25	26	27	28	29
30						

July '24						
Su	M	Tu	W	Th	F	Sa
	1	2	3	4	5	6
7	8	9	10	11	12	13
14	15	16	17	18	19	20
21	22	23	24	25	26	27
28	29	30	31			

**First & Last Day**

**PD Days: No School for Students**

**No School for Students and Staff**

**SLCs - No School for Students**

**Family Visits**

M, Tu, Th, F Daily Schedule:  
8:00 a.m. - 3:25 p.m.

Wednesday Early Release:  
8:00 a.m.-2:00 p.m.

# Below is the approved calendar for the 2024-25 school year.

## Renaissance PSA 2024-2025 Calendar

August '24						
Su	M	Tu	W	Th	F	Sa
				1	2	3
4	5	6	7	8	9	10
11	12	13	14	15	16	17
18	19	20	21	22	23	24
25	26	27	28	29	30	31

September '24						
Su	M	Tu	W	Th	F	Sa
1	2	3	4	5	6	7
8	9	10	11	12	13	14
15	16	17	18	19	20	21
22	23	24	25	26	27	28
29	30					

October '24						
Su	M	Tu	W	Th	F	Sa
		1	2	3	4	5
6	7	8	9	10	11	12
13	14	15	16	17	18	19
20	21	22	23	24	25	26
27	28	29	30	31		

First & Last Day  
PD Days: No School for Students  
No School for Students and Staff  
SLCs - No School for Students  
Family Visits

November '24						
Su	M	Tu	W	Th	F	Sa
					1	2
3	4	5	6	7	8	9
10	11	12	13	14	15	16
17	18	19	20	21	22	23
24	25	26	27	28	29	30

December '24						
Su	M	Tu	W	Th	F	Sa
1	2	3	4	5	6	7
8	9	10	11	12	13	14
15	16	17	18	19	20	21
22	23	24	25	26	27	28
29	30	31				

January '25						
Su	M	Tu	W	Th	F	Sa
			1	2	3	4
5	6	7	8	9	10	11
12	13	14	15	16	17	18
19	20	21	22	23	24	25
26	27	28	29	30	31	

M, Tu, Th, F Daily Schedule:  
8:00 a.m. - 3:25 p.m.

Wednesday Early Release:  
8:00 a.m. - 2:00 p.m.

February '25						
Su	M	Tu	W	Th	F	Sa
						1
2	3	4	5	6	7	8
9	10	11	12	13	14	15
16	17	18	19	20	21	22
23	24	25	26	27	28	

March '25						
Su	M	Tu	W	Th	F	Sa
						1
2	3	4	5	6	7	8
9	10	11	12	13	14	15
16	17	18	19	20	21	22
23	24	25	26	27	28	29
30	31					

April '25						
Su	M	Tu	W	Th	F	Sa
		1	2	3	4	5
6	7	8	9	10	11	12
13	14	15	16	17	18	19
20	21	22	23	24	25	26
27	28	29	30			

May '25						
Su	M	Tu	W	Th	F	Sa
				1	2	3
4	5	6	7	8	9	10
11	12	13	14	15	16	17
18	19	20	21	22	23	24
25	26	27	28	29	30	31

June '25						
Su	M	Tu	W	Th	F	Sa
1	2	3	4	5	6	7
8	9	10	11	12	13	14
15	16	17	18	19	20	21
22	23	24	25	26	27	28
29	30					

July '25						
Su	M	Tu	W	Th	F	Sa
		1	2	3	4	5
6	7	8	9	10	11	12
13	14	15	16	17	18	19
20	21	22	23	24	25	26
27	28	29	30	31		