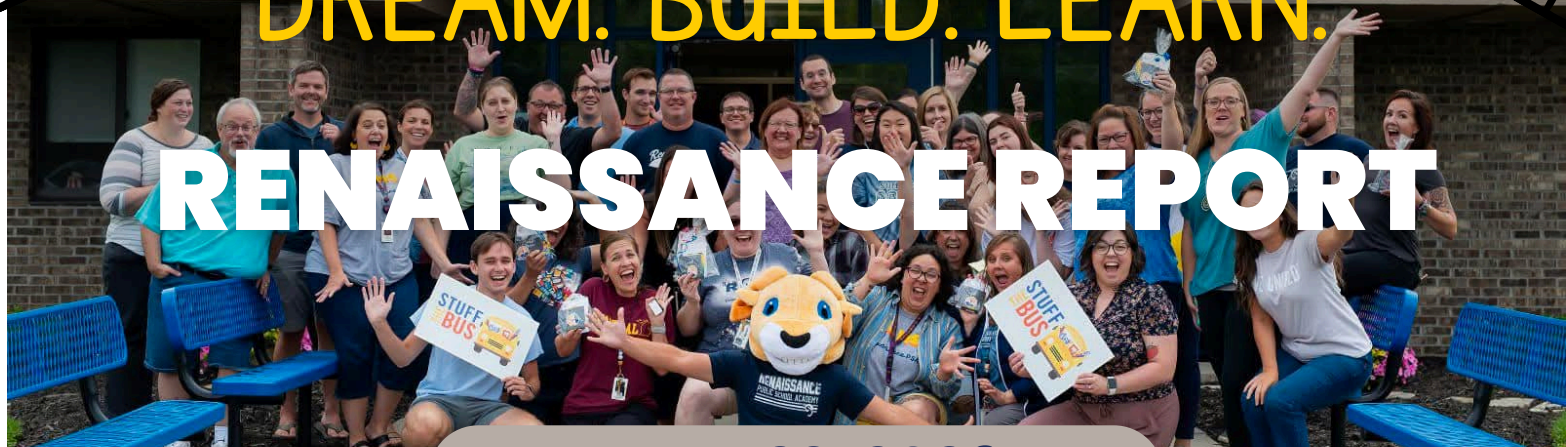


# DREAM. BUILD. LEARN.

# RENAISSANCE REPORT



May 22, 2026

## #RAMSPRIDE

We hope everyone enjoys a fun and safe Memorial Day Weekend.

See you Tuesday, May 26, 2026!

## IMPORTANT TO DOS:



Check Seesaw for updates from your child's teacher - there are lots of trips and special events this month

## UPCOMING EVENTS

- May 25<sup>th</sup> - No School
- June 2<sup>nd</sup> - 8<sup>th</sup> Grade & Kindergarten Graduations
- June 3<sup>rd</sup> - Last Day of School & Family Picnic

## SCHOOL DAY HOURS

- 7:40am: School Doors Open
- 8:00am: School Day Begins
- 3:25pm: Dismissal
  - Wednesday 2:00pm Dismissal



# #RAMSPRIDE



Be Safe    Be Responsible  
Be Kind    Work Hard

We love celebrating our students when they're caught showing RAMS Pride. We look for students who are being safe, being responsible, being kind, or working hard and try to highlight them with a "Shout Out". Students receive a blue paper to bring home and show off to their families. Their names are also included in the weekly newsletter. The first time a student receives a shout out, they get to visit the book vending machine too!

We're excited to celebrate these amazing students who received a Shout Out this week!

- Elle R.
- Cadence L.
- Alexander Z.
- Oliver W.
- Elijah A.
- Daniel L.
- Gwendolyn S.
- Isaiah W.
- Justis P.
- Ben L.
- Rebeca M.
- Jensen H.
- Mason T.
- William S.
- Da'Knyla S.
- Amelia R.
- Brian P.
- Harper L.
- Madalyn K.
- Forest K.
- Jace H.
- Trinity H.
- Paisley H.
- Nikan H.
- Aleska F.
- Luxley F.
- Ellen D.
- Jonah D.
- Azariah C.
- Bennett C.
- Charlotte B.
- Jaxson B.
- Julien B.
- Genesis P.
- Ryan T.
- Emma P.

# #RAMSPRIDE



Be Safe    Be Responsible  
Be Kind    Work Hard

- Cara B.
- Elliott W.
- Elizabeth F.
- Callista W.
- Elliana P.
- Natalie N.
- Aryani H.
- Roxanna H.
- Viola B.
- Judah H.
- Gabriel P.
- Tre C.
- Angelina R.
- Max P.
- Caleb K.
- Freya S.
- Kota T.
- Hailee Y.
- Remi Y.
- Estella T.
- Mira S-J
- Autumn S.
- Aaron S.
- Major L.
- Callen L.
- Maeve J.
- Elianna H.
- Brooklyn F.
- Evelyn R.
- Esme G.
- Phoenix G.
- Lucah C.
- Layla B.
- Layan A.
- Olivia C.
- Deus L.
- Adi W.
- Cam D.
- Andrew N.
- Elliot B.
- Aubriella R.
- Kavon T.
- Addison N.

FIND ROOTS 'N ROOST  
AT THE  
**Farmers  
Market**

| **THURSDAY** | 7:30-  
2:00

We will be at Island  
Park every Thursday in  
May! Selling Eggs,  
Vegetables, T-shirts,  
Tote bags and more!



# Graduation Ceremonies

- 8<sup>th</sup> Grade: 9:00am, June 2, 2026
- Kindergarten: 1:00 pm, June 2, 2026



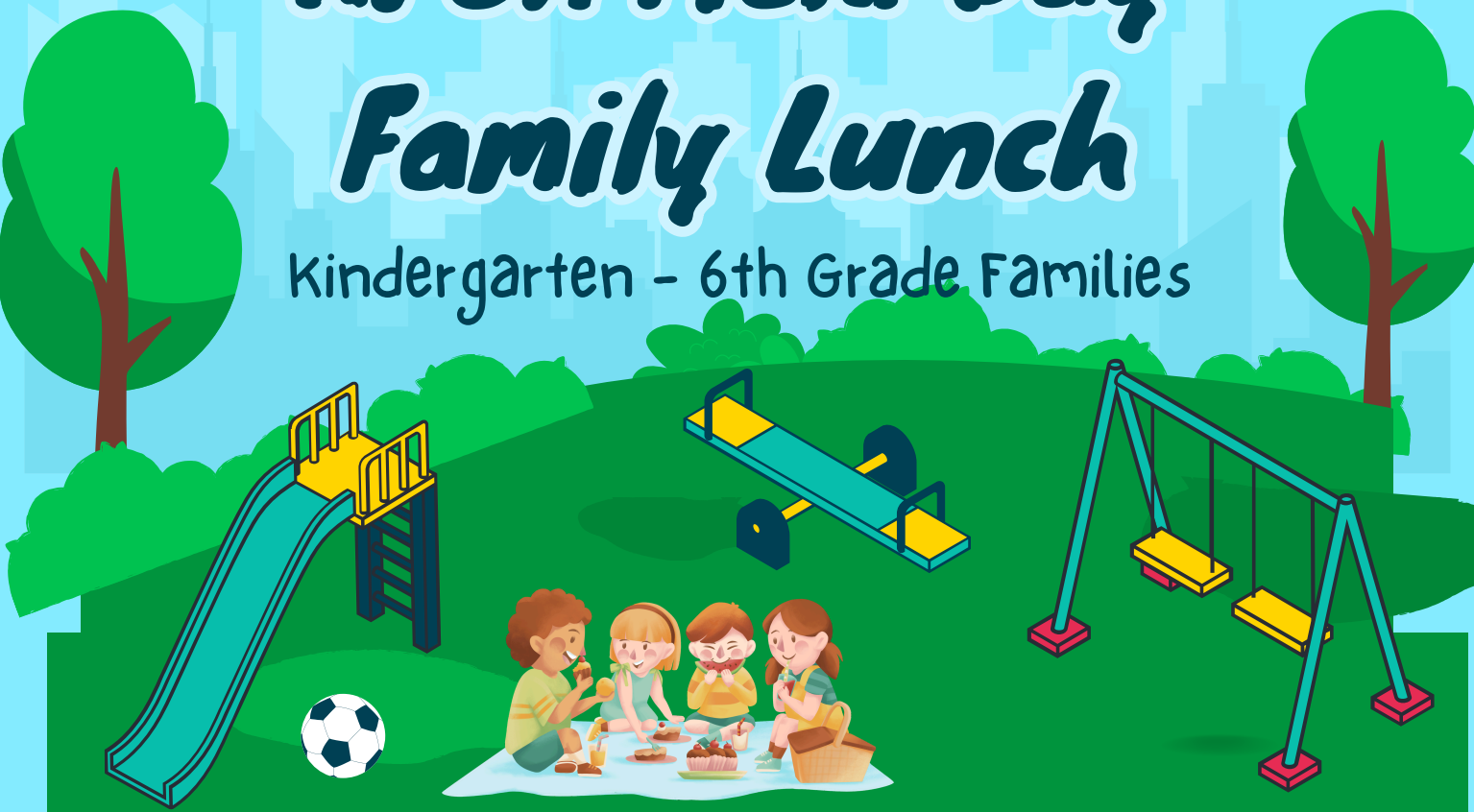


You're invited to join us for an

# *RPSA Field Day*

# *Family Lunch*

Kindergarten - 6th Grade Families



**3** **JUNE 2026**  
11:00am - 12:00pm

Families are invited to join us for lunch between field day activities to celebrate the last day of school. Families can choose to bring lunch with them or just join your child while they eat a school lunch. Families will meet their child's class behind the school in the playground area. K-2 parents are welcome to stay and join their child's class to watch field day after lunch.

Parking will be available in the RPSA parking lot and at Morey Courts.

# RPSA 6<sup>TH</sup> ANNUAL WALK-A-THON



TO ALL OF OUR COMMUNITY SPONSORS:

***Thank you!***



## SILVER

Central Michigan  
Orthodontics

Meijer

I Scream  
Ice Cream

Keepin' It Local  
in the 989

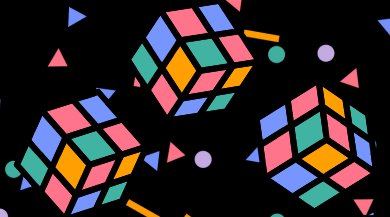
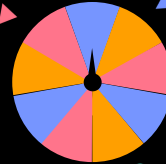
## BRONZE

Celebration Cinema  
GreenTree Co-op  
Pisanellos  
Sleepy Dog Books  
The Golf Center  
The Jump Station  
Stans  
Max and Emily's

Buckley's Canoes  
Pleasant City  
Great Lakes Loons  
Dog Central  
Biggy  
Mt. Pleasant Discovery  
Museum  
Riverwood Resort  
Valhalla Axe Throwing  
Creation Coffee

# RPSA SUMMER EVENTS

START!



Summer events are open to all RPSA students and their families. There is no cost to attend, and all events are designed for students of all ages. Flyers and sign-up information will be posted on the RPSA Facebook page two weeks prior to each event.

JUNE 17TH  
FISHING  
FRENZY

JUNE 25TH  
FOR ART  
SAKE

R, A, M, S

JUNE 30TH  
CELEBRATION  
CINEMA

FINISH!

Don't miss your chance to win!  
At each event, Parent Club will  
be raffling off a themed gift  
basket, each one filled with a  
variety of fun surprises!

JULY 21ST  
BACKYARD  
BBQ!

JULY 16TH  
FARMERS'  
MARKET

Email Mrs. Reger  
with any questions at  
[treger@renaissancepsa.com](mailto:treger@renaissancepsa.com)





		5/26/26	5/27/26	5/28/26	5/29/26
<b>Breakfast</b>		Banna Bread Cheese Stick Fruit Juice Milk	Cereal Frozen Fruit Sorbert Fuit Juice Milk	Cereal Apple Sauce Fruit Juice Milk	Blueberry Donuts Frozen Fruit Sorbert Apple Sauce Milk
<b>Lunch</b>		Chicken Sandwich Waffle Fries Fruit Milk or Chicken Salad	Dominos Pepperoni Pizza Mandarin Oranges Broccoli w/ Ranch Vegetable Juice Milk or Chicken Salad	Walking Tacos Refried Beans Fruit Milk or Chicken Salad	Hot Dog Baked Beans Fruit Milk or Chicken Salad

Choice of White or Chocolate Milk Served Daily

USDA Nondiscrimination Statement In accordance with federal civil rights law and U.S. Department of Agriculture (USDA) civil rights regulations and policies, this institution is prohibited from discriminating on the basis of race, color, national origin, sex (including gender identity and sexual orientation), disability, age, or reprisal or retaliation for prior civil rights activity. Program information may be made available in languages other than English. Persons with disabilities who require alternative means of communication to obtain program information (e.g., Braille, large print, audiotape, American Sign Language), should contact the responsible state or local agency that administers the program or USDA's TARGET Center at (202) 720-2600 (voice and TTY) or contact USDA through the Federal Relay Service at (800) 877-8339. To file a program discrimination complaint, a Complainant should complete a Form AD-3027, USDA Program Discrimination Complaint Form which can be obtained online at: USDA Program Discrimination Complaint Form, from any USDA office, by calling (866) 632-9992, or by writing a letter addressed to USDA. The letter must contain the complainant's name, address, telephone number, and a written description of the alleged discriminatory action in sufficient detail to inform the Assistant Secretary for Civil Rights (ASCR) about the nature and date of an alleged civil rights violation. The completed AD-3027 form or letter must be submitted to USDA by:

Mail U. S. Department of Agriculture Office of the Assistant Secretary for Civil Rights, 1400 Independence Avenue, SW Washington, D.C. 20250-9410 or Fax (202) 266-1866 or (202) 896-7442 or Email Program.intake@usda.gov

## Renaissance PSA 2025-2026 Calendar

August '25						
Su	M	Tu	W	Th	F	Sa
					1	2
3	4	5	6	7	8	9
10	11	12	13	14	15	16
17	18	19	20	21	22	23
24	25	26	27	28	29	30
31						

September '25						
Su	M	Tu	W	Th	F	Sa
	1	2	3	4	5	6
7	8	9	10	11	12	13
14	15	16	17	18	19	20
21	22	23	24	25	26	27
28	29	30				

October '25						
Su	M	Tu	W	Th	F	Sa
			1	2	3	4
5	6	7	8	9	10	11
12	13	14	15	16	17	18
19	20	21	22	23	24	25
26	27	28	29	30	31	

First & Last Day
PD Days: No School for Students
No School for Students and Staff
SLCs - No School for Students
Family Visits

November '25						
Su	M	Tu	W	Th	F	Sa
						1
2	3	4	5	6	7	8
9	10	11	12	13	14	15
16	17	18	19	20	21	22
23	24	25	26	27	28	29
30						

December '25						
Su	M	Tu	W	Th	F	Sa
	1	2	3	4	5	6
7	8	9	10	11	12	13
14	15	16	17	18	19	20
21	22	23	24	25	26	27
28	29	30	31			

January '26						
Su	M	Tu	W	Th	F	Sa
				1	2	3
4	5	6	7	8	9	10
11	12	13	14	15	16	17
18	19	20	21	22	23	24
25	26	27	28	29	30	31

M, Tu, Th, F Daily Schedule:  
8:00 a.m. - 3:25 p.m.

Wednesday Early Release:  
8:00 a.m. - 2:00 p.m.

February '26						
Su	M	Tu	W	Th	F	Sa
1	2	3	4	5	6	7
8	9	10	11	12	13	14
15	16	17	18	19	20	21
22	23	24	25	26	27	28

March '26						
Su	M	Tu	W	Th	F	Sa
1	2	3	4	5	6	7
8	9	10	11	12	13	14
15	16	17	18	19	20	21
22	23	24	25	26	27	28
29	30	31				

April '26						
Su	M	Tu	W	Th	F	Sa
			1	2	3	4
5	6	7	8	9	10	11
12	13	14	15	16	17	18
19	20	21	22	23	24	25
26	27	28	29	30		

May '26						
Su	M	Tu	W	Th	F	Sa
					1	2
3	4	5	6	7	8	9
10	11	12	13	14	15	16
17	18	19	20	21	22	23
24	25	26	27	28	29	30
31						

June '26						
Su	M	Tu	W	Th	F	Sa
	1	2	3	4	5	6
7	8	9	10	11	12	13
14	15	16	17	18	19	20
21	22	23	24	25	26	27
28	29	30				

July '26						
Su	M	Tu	W	Th	F	Sa
			1	2	3	4
5	6	7	8	9	10	11
12	13	14	15	16	17	18
19	20	21	22	23	24	25
26	27	28	29	30	31	

# Board Approved Calendar for 2026-2027

## Renaissance PSA 2026-2027 Calendar

August '26						
Su	M	Tu	W	Th	F	Sa
						1
2	3	4	5	6	7	8
9	10	11	12	13	14	15
16	17	18	19	20	21	22
23	24	25	26	27	28	29
30	31					

September '26						
Su	M	Tu	W	Th	F	Sa
		1	2	3	4	5
6	7	8	9	10	11	12
13	14	15	16	17	18	19
20	21	22	23	24	25	26
27	28	29	30			

October '26						
Su	M	Tu	W	Th	F	Sa
				1	2	3
4	5	6	7	8	9	10
11	12	13	14	15	16	17
18	19	20	21	22	23	24
25	26	27	28	29	30	31

First & Last Day
PD Days: No School for Students
No School for Students and Staff
SLCs - No School for Students
Family Visits

November '26						
Su	M	Tu	W	Th	F	Sa
1	2	3	4	5	6	7
8	9	10	11	12	13	14
15	16	17	18	19	20	21
22	23	24	25	26	27	28
29	30					

December '26						
Su	M	Tu	W	Th	F	Sa
		1	2	3	4	5
6	7	8	9	10	11	12
13	14	15	16	17	18	19
20	21	22	23	24	25	26
27	28	29	30	31		

January '27						
Su	M	Tu	W	Th	F	Sa
					1	2
3	4	5	6	7	8	9
10	11	12	13	14	15	16
17	18	19	20	21	22	23
24	25	26	27	28	29	30
31						

M, Tu, Th, F Daily Schedule:
8:00 a.m. - 3:25 p.m.

Wednesday Early Release:
8:00 a.m. - 2:00 p.m.

February '27						
Su	M	Tu	W	Th	F	Sa
	1	2	3	4	5	6
7	8	9	10	11	12	13
14	15	16	17	18	19	20
21	22	23	24	25	26	27
28						

March '27						
Su	M	Tu	W	Th	F	Sa
	1	2	3	4	5	6
7	8	9	10	11	12	13
14	15	16	17	18	19	20
21	22	23	24	25	26	27
28	29	30	31			

April '27						
Su	M	Tu	W	Th	F	Sa
				1	2	3
4	5	6	7	8	9	10
11	12	13	14	15	16	17
18	19	20	21	22	23	24
25	26	27	28	29	30	

May '27						
Su	M	Tu	W	Th	F	Sa
						1
2	3	4	5	6	7	8
9	10	11	12	13	14	15
16	17	18	19	20	21	22
23	24	25	26	27	28	29
30	31					

June '27						
Su	M	Tu	W	Th	F	Sa
		1	2	3	4	5
6	7	8	9	10	11	12
13	14	15	16	17	18	19
20	21	22	23	24	25	26
27	28	29	30			

July '27						
Su	M	Tu	W	Th	F	Sa
				1	2	3
4	5	6	7	8	9	10
11	12	13	14	15	16	17
18	19	20	21	22	23	24
25	26	27	28	29	30	31

