

**MAY 21, 2024**

# RAMS RECAP

*Renaissance Public School Academy Newsletter*



*Renaissance Academy*

# RAMS

## UPCOMING EVENTS

**No School**

**May 24 & 27, 2024**

**Blaze Pizza PTO  
Fundraiser**

**May 28, 2024**

**Kindergarten  
Graduation**

**June 4, 2024**

**8th Grade  
Graduation**

**June 5, 2024**

**Field Day & Family  
Lunch (Last Day of  
School)**

**June 6, 2024**

Hello RPSA Families!

What a great day at RPSA today!! We all had so much fun participating in the PTO Walk-a-Thon. Students walked & ran more laps than we could have ever anticipated. We are so thankful to have a wonderful PTO who create these great opportunities for our entire school community to have fun together.

We are getting ready for the final 2 weeks of the school year and every grade level is BUSY wrapping up units, preparing for summer, and enjoying our final days together. Please be sure to check Seesaw regularly as updates regarding end of year events, final field trips, and final project events will be shared by classroom teachers.

We're very excited to be inviting families to join us for a picnic lunch on June 6th. This is our last day of school for the year and we will be enjoying field day activities. If you're able to join your child's class for a picnic lunch we would love to see you! See the flyer below with more details.

We hope you have a wonderful Memorial Weekend!

With RAMS Pride,  
RPSA Leadership Team

# Student Shout Outs

- Clayton A.
- Jasper H.
- Jaxson M.
- Atticus M.
- Waylon R.
- Asher R.
- Shi S.
- Porter W.
- Laytin S.
- Lennon W.
- Olive F.
- Ebunife S.
- Isaiah C.
- Rhy B.
- Caleb K.
- Elliana P.
- Charles A.
- Cam D.
- Adam D.
- Peyton H.
- Emilio M-D
- Husain A.
- Steven F.
- Maci G.
- Angela P.
- Ezzy S.

**#RAMSPRIDE**



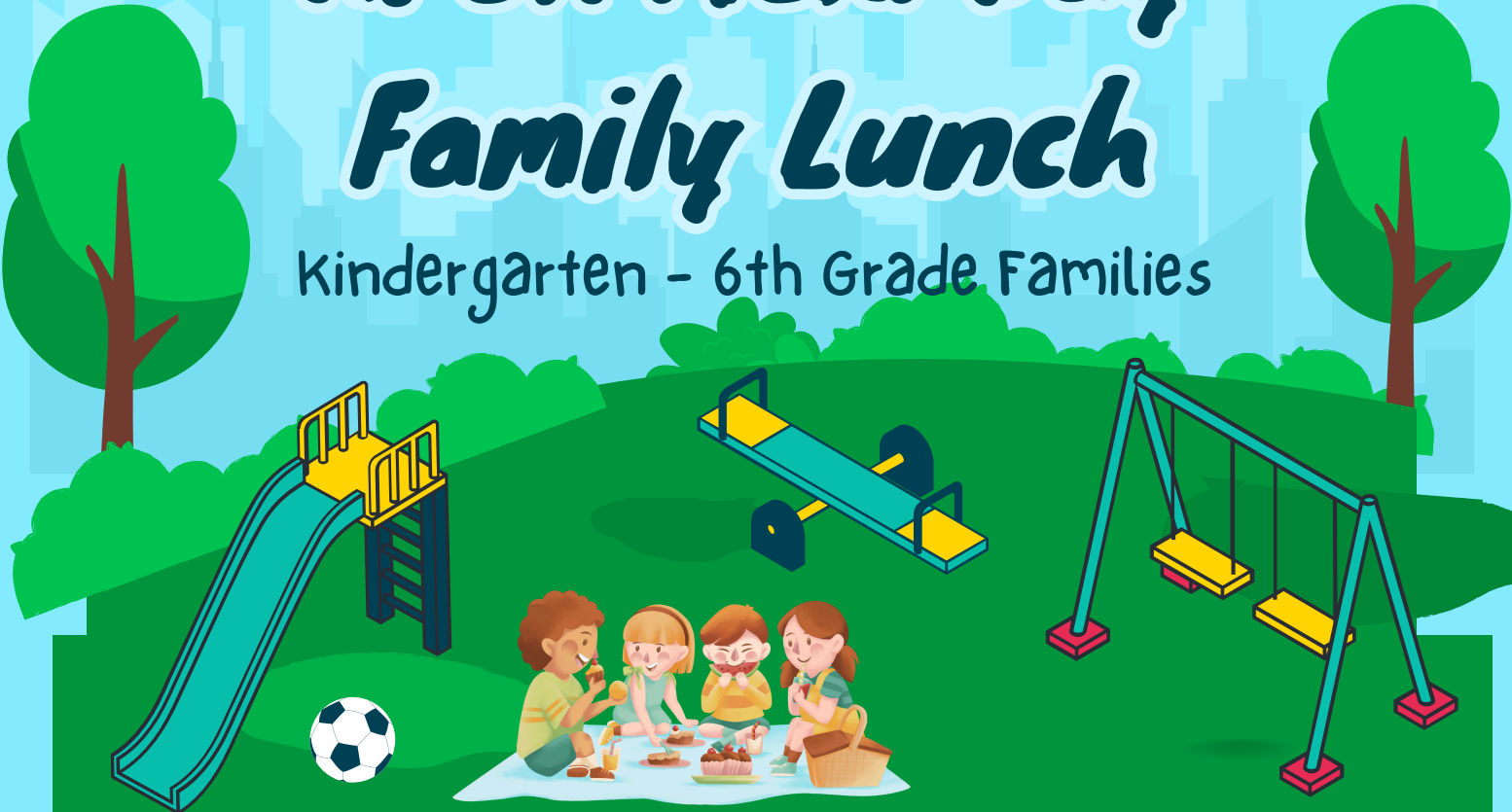


You're invited to join us for an

# *RPSA Field Day*

# *Family Lunch*

Kindergarten - 6th Grade Families



**6 JUNE 2024**  
11:00am - 12:00pm

Families are invited to join us for lunch between field day activities to celebrate the last day of school. Families can choose to bring lunch with them or just join your child while they eat a school lunch. Families will meet their child's class behind the school in the playground area.

Parking will be available in the RPSA parking lot, at Morey Courts, and a shuttle will be available to transport from the First Baptist Church at 1802 E. High St.



# REMINDER

THERE IS NO AFTER  
SCHOOL PROGRAM  
THE LAST WEEK OF  
SCHOOL. BEFORE  
SCHOOL WILL RUN  
NORMALLY :)

**\$3 per dozen**  
while supplies last!

# FRESH EGGS FOR SALE!



Laid by  
chickens from  
Renaissance.  
Now available  
to purchase by  
the coop.



To purchase eggs,  
please park and walk  
up to the chicken coop.  
Eggs will be available  
to purchase every  
Friday.

**Thank you PTO  
for a great  
Walk-A-Thon  
today!**



**THANK  
YOU**

**TO OUR 2024 RPSA WALK-A-THON SPONSORS**

**PLATINUM**

**Mt. Pleasant Martial Arts  
Crossfit Worthy  
Modern Woodmen  
Sally Rudy Photography  
Isabella Community Credit Union  
Mercantile Bank  
Members First Credit Union  
Krapohl Ford**

**SILVER**

**The Painted Turtle  
Three Oaks Therapeutics  
Celebration Cinema  
Central Michigan Orthodontics  
Isabella Bank  
Keller Williams Realty  
Wiefrich Financial  
Doozie's**

**BRONZE**

**Sleepy Dog Books  
The Golf Center  
The Jump Station  
Mt. Pleasant Discovery Museum  
Pisanello's  
Riverwood  
Morey Gymnastics Center  
Barberi Law Firm  
Valhalla Axe Throwing  
Art Reach of MidMichigan  
Starbucks (M-20/Pickard)**





**EAT SOME PIZZA,  
RAISE SOME DOUGH!**



Download Our  
Mobile App!

Enjoy yourself and support our cause at a special fundraising event for:

## Renaissance Academy PTO

**BLAZE PIZZA WILL DONATE 20% OF PROCEEDS FROM YOUR ORDER BACK TO THIS ORGANIZATION!**

- Date:** Tuesday, May 28, 2024
- Time:** 11:00 am – 9:00 pm
- Location:** 1218 South Mission Street, Mt. Pleasant
- Order Method:**

**In Restaurant:** Present this flyer or show a copy of it on your phone before paying. **FUND A**

**Online & App Orders:** Orders must be placed online at [blazepizza.com](http://blazepizza.com) or through the Blaze Pizza app. Enter **1358A** into the "Coupon Code" field at checkout to have your transaction count toward the fundraiser. If entered correctly, you'll see a \$.01 discount applied to your check which confirms that 20% of your transaction will be counted into the total donation. **VALID FOR PICKUP, CARRYOUT AND CURBSIDE & DELIVERY WHERE AVAILABLE.**

**VALID FOR DINE-IN, PICK-UP AND DELIVERY AND CURBSIDE WHERE AVAILABLE THROUGH THE BLAZE PIZZA APP & WEBSITE.** For online orders, only transactions that have the promo code applied during the time and date specified above will be counted toward the donation total. Donation amount excludes proceeds from tax and giftcard purchases. Excludes 3rd party delivery and phone orders. **FLYER DISTRIBUTION IN-RESTAURANT PROHIBITED**



# RPSA SUMMER EVENTS ARE BACK!



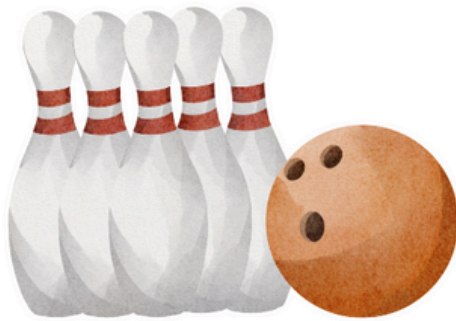
**CELEBRATION CINEMA  
INSIDE OUT 2  
JUNE 18TH AT 2 PM**



**ART REACH  
JUNE 25TH FROM 4 - 7 PM**



**JUMP STATION  
JULY 10TH FROM 12 - 3 PM**



**RIVERWOOD BOWLING ALLEY  
JULY 18TH FROM 4 - 7 PM**



**MT. PLEASANT FARMERS MARKET  
JULY 25TH FROM 8 AM - 1 PM**

Students will be sent home with a flyer and a bingo card. Complete activities and attend events to complete bingos! Prizes will be available at each event!

Summer events are available for all RPSA Students and Families. There is no cost to attend and all activities are suitable for students of all ages. Flyers and signups will be available two weeks before each event on the RPSA Facebook Page.

**Email Mrs. Reger with any questions at [treger@renaissancepsa.com](mailto:treger@renaissancepsa.com)**



JOIN US FOR A  
STEAM-THEMED

# MOVIE NIGHT!



PRESENTED BY  
THE MPHS CSO'S

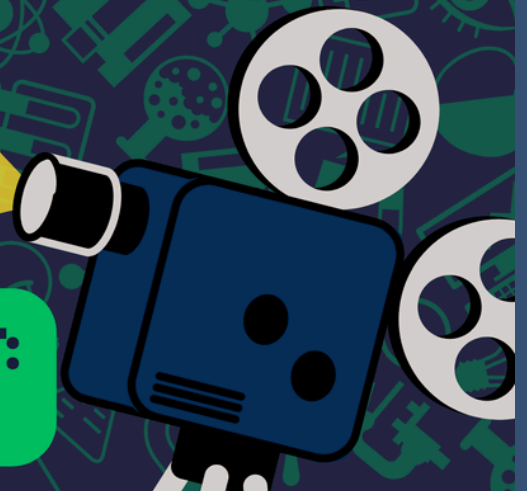


**TWO SCREENINGS**  
THURSDAY, MAY 30 -  
JURASSIC PARK (PG-13)

FRIDAY, MAY 31 -  
BIG HERO 6 (PG)

**BOTH FROM**  
5:30-8:30PM

FOR MORE INFO, EMAIL US AT:  
[MPHSCSO@GMAIL.COM](mailto:MPHSCSO@GMAIL.COM)



# FREE School Sports Physicals For School Year 2024-25



Sports physicals performed anytime after April 15 are valid for the entire following school year. **Don't wait until practices begin to get your child's physical.** Beat the last-minute rush with these **FREE** walk-in school sports physicals in multiple convenient locations. Bring your completed MHSAA form, signed by a parent or guardian. **Minors must be accompanied by a parent or guardian.**

If your child has existing medical conditions or is seeing a specialist, you will also need clearance from their physician. We recommend you begin this process as soon after April 15 as possible and well before the first scheduled practice to allow for any additional appointments or testing that may be required.

## Alma

**Mon., June 17 • 3 - 5 p.m.**

*Family Practice Center Alma*  
330 E. Warwick Drive

## Clare

**Wed., May 29 & Mon., June 3  
5:30 - 7:30 p.m.**

*MyMichigan Medical Offices Clare*  
602 Beech Street, Suites 2200 and 2240

## Gladwin

**Thurs., June 20 • 4 - 7 p.m.**

*MyMichigan Health Park Gladwin*  
1105 Cedar Avenue

## Harrison

**Wed., June 5 • 4 - 7 p.m.**

*MyMichigan Health Park Harrison*  
815 N. Clare Avenue, Suite A

## Shepherd

**Thurs., May 30 • 3:30 - 6 p.m.**

*MyMichigan Family Medicine*  
364 W. Wright Street

## West Branch

**Thurs., June 6 & Fri., June 7  
4 - 8 p.m.**

*MyMichigan Health Park West Branch*  
335 E. Houghton Avenue

## *Your Primary Care Provider is Your Partner In Good Health*

Your best care is achieved through your personal primary care provider. We encourage you to have yearly wellness exams through your own primary care provider, and in many cases, you can complete your sports physical at the same time as your yearly visit. We offer these clinics as additional options for students whose wellness exam falls outside the window for participation in sports.

If you are unable to attend on these dates, we recommend that you contact your primary care provider to arrange a sports physical. If you do not have a primary care provider, we are welcoming new patients in multiple locations, and would be happy to schedule a new patient visit. For help finding a primary care provider, call MyMichigan Health Line (800) 999-3199.



# DRIVE-THROUGH MOBILE FOOD DISTRIBUTION

FOR ALL ISABELLA COUNTY RESIDENTS

## Saturday, June 15, 2024

**Registration:** 9:00 a.m. for vehicles to line up

**Distribution:** 10:30 a.m. - 12:00 p.m. (or until food is distributed)

### Black Elk Building Parking Lot

7500 Soaring Eagle Blvd., Mt. Pleasant MI, 48858

## FREE shelf stable, frozen and produce

### Details:

- Proof of Residency: bring government-issued ID or mail with your address
- Stay in your vehicle for registration and food distribution
- Food will be placed in your trunk/hatchback, so please make room ahead of time
- Restrooms will NOT be available
- If you have any symptoms of COVID-19, please stay home, and arrange for someone to bring your identification and a note allowing them to pick up food for you

### Who Can Participate:

Anyone in financial hardship or in need of food for any reason.

### For more information, please call:

Greater Lansing Food Bank at (517) 449-0360

*For the safety of our volunteers and staff, we ask that you wear a mask, if you are able. Masks will be available if you do not have one.*

*In accordance with Federal law and U.S. Department of Agriculture policy, this institution is prohibited from discriminating based on race, color, national origin, sex, age, or disability.*



**Saginaw Chippewa Indian Tribe of Michigan**

*“Working Together for Our Future”*

7500 Soaring Eagle Blvd.  
Mount Pleasant, MI 48858  
989-775-4000  
[www.sagchip.org](http://www.sagchip.org)

# May Breakfast Menu

WEDNESDAY 01

THURSDAY 02

Friday 03

Cinnamon Pull  
aparts  
Fruit  
Milk

Yogurt  
Granola Bar  
Fruit  
Milk

Donuts  
Fruit  
Milk

MONDAY 06

TUESDAY 07

WEDNESDAY 08

THURSDAY 09

FRIDAY 10

Poptart  
Graham Crackers  
Fruit  
Milk

Cereal  
Graham Crackers  
Fruit  
Milk

Cinnamon Pull  
aparts  
Fruit  
Milk

Yogurt  
Granola Bar  
Fruit  
Milk

Donuts  
Fruit  
Milk

MONDAY 13

TUESDAY 14

WEDNESDAY 15

THURSDAY 16

FRIDAY 17

Poptart  
Graham Crackers  
Fruit  
Milk

Cereal  
Graham Crackers  
Fruit  
Milk

Cinnamon Pull  
aparts  
Fruit  
Milk

Yogurt  
Granola Bar  
Fruit  
Milk

Donuts  
Fruit  
Milk

MONDAY 20

TUESDAY 21

WEDNESDAY 22

THURSDAY 23

FRIDAY 24

Poptart  
Graham Crackers  
Fruit  
Milk

Cereal  
Graham Crackers  
Fruit  
Milk

Cinnamon Pull  
aparts  
Fruit  
Milk

Yogurt  
Granola Bar  
Fruit  
Milk

NO SCHOOL

MONDAY 27

TUESDAY 28

WEDNESDAY 29

THURSDAY 30

FRIDAY 31

NO SCHOOL

Cereal  
Graham Crackers  
Fruit  
Milk

Cinnamon Pull  
aparts  
Fruit  
Milk

Yogurt  
Granola Bar  
Fruit  
Milk

Donuts  
Fruit  
Milk

# May Lunch Menu

WEDNESDAY 01

THURSDAY 02

FRIDAY 03

Cold Option:  
Salad with Chicken,  
Veggies, Croutons,  
Cheese, and Ranch

Pepperoni  
Pizza  
Baby Carrots  
Fruit  
Milk

Chicken Patty  
on a bun  
Fresh Broccoli  
Fruit  
Milk

Mini Corndogs  
Beans  
Fruit  
Milk

MONDAY 06

TUESDAY 07

WEDNESDAY 08

THURSDAY 09

FRIDAY 10

Taco Pizza  
bites  
w/salsa  
Sour Cream  
Fruit  
Milk

Belgian Waffle  
w/ Sausage  
Hashbrowns  
Fruit  
Milk

Cheese Pizza  
Baby Carrots  
Fruit  
Milk

Chicken Patty  
on a bun  
Fresh Broccoli  
Fruit  
Milk

Mini Corndogs  
Beans  
Fruit  
Milk

MONDAY 13

TUESDAY 14

WEDNESDAY 15

THURSDAY 16

FRIDAY 17

Taco Pizza  
bites  
w/salsa  
Sour Cream  
Fruit  
Milk

Belgian Waffle  
w/ Sausage  
Hashbrowns  
Fruit  
Milk

Pepperoni  
Pizza  
Baby Carrots  
Fruit  
Milk

Chicken Patty  
on a bun  
Fresh Broccoli  
Fruit  
Milk

Mini Corndogs  
Beans  
Fruit  
Milk

MONDAY 20

TUESDAY 21

WEDNESDAY 22

THURSDAY 23

FRIDAY 24

Taco Pizza  
bites  
w/salsa  
Sour Cream  
Fruit  
Milk

Belgian Waffle  
w/ Sausage  
Hashbrowns  
Fruit  
Milk

Cheese Pizza  
Baby Carrots  
Fruit  
Milk

Chicken Patty  
on a bun  
Fresh Broccoli  
Fruit  
Milk

NO SCHOOL

MONDAY 27

TUESDAY 28

WEDNESDAY 29

THURSDAY 30

FRIDAY 31

NO SCHOOL

Belgian Waffle  
w/ Sausage  
Hashbrowns  
Fruit  
Milk

Pepperoni  
Pizza  
Baby Carrots  
Fruit  
Milk

Chicken Patty  
on a bun  
Fresh Broccoli  
Fruit  
Milk

Mini Corndogs  
Beans  
Fruit  
Milk

# Renaissance PSA 2023-2024 Calendar

August '23						
M	Tu	W	Th	F	Sa	
	1	2	3	4	5	
7	8	9	10	11	12	
14	15	16	17	18	19	
21	22	23	24	25	26	
28	29	30	31			

September '23						
Su	M	Tu	W	Th	F	Sa
					1	2
3	4	5	6	7	8	9
10	11	12	13	14	15	16
17	18	19	20	21	22	23
24	25	26	27	28	29	30

October '23						
Su	M	Tu	W	Th	F	Sa
1	2	3	4	5	6	7
8	9	10	11	12	13	14
15	16	17	18	19	20	21
22	23	24	25	26	27	28
29	30	31				

November '23						
M	Tu	W	Th	F	Sa	
		1	2	3	4	
6	7	8	9	10	11	
13	14	15	16	17	18	
20	21	22	23	24	25	
27	28	29	30			

December '23						
Su	M	Tu	W	Th	F	Sa
					1	2
3	4	5	6	7	8	9
10	11	12	13	14	15	16
17	18	19	20	21	22	23
24	25	26	27	28	29	30
31						

January '24						
Su	M	Tu	W	Th	F	Sa
	1	2	3	4	5	6
7	8	9	10	11	12	13
14	15	16	17	18	19	20
21	22	23	24	25	26	27
28	29	30	31			

February '24						
M	Tu	W	Th	F	Sa	
			1	2	3	
5	6	7	8	9	10	
12	13	14	15	16	17	
19	20	21	22	23	24	
26	27	28	29			

March '24						
Su	M	Tu	W	Th	F	Sa
					1	2
3	4	5	6	7	8	9
10	11	12	13	14	15	16
17	18	19	20	21	22	23
24	25	26	27	28	29	30
31						

April '24						
Su	M	Tu	W	Th	F	Sa
	1	2	3	4	5	6
7	8	9	10	11	12	13
14	15	16	17	18	19	20
21	22	23	24	25	26	27
28	29	30				

May '24						
M	Tu	W	Th	F	Sa	
		1	2	3	4	
6	7	8	9	10	11	
13	14	15	16	17	18	
20	21	22	23	24	25	
27	28	29	30	31		

June '24						
Su	M	Tu	W	Th	F	Sa
						1
2	3	4	5	6	7	8
9	10	11	12	13	14	15
16	17	18	19	20	21	22
23	24	25	26	27	28	29
30						

July '24						
Su	M	Tu	W	Th	F	Sa
	1	2	3	4	5	6
7	8	9	10	11	12	13
14	15	16	17	18	19	20
21	22	23	24	25	26	27
28	29	30	31			

**First & Last Day**

**PD Days: No School for Students**

**No School for Students and Staff**

**SLCs - No School for Students**

**Family Visits**

M, Tu, Th, F Daily Schedule:  
8:00 a.m. - 3:25 p.m.

Wednesday Early Release:  
8:00 a.m.-2:00 p.m.

# Below is the approved calendar for the 2024-25 school year.

## Renaissance PSA 2024-2025 Calendar

August '24						
Su	M	Tu	W	Th	F	Sa
				1	2	3
4	5	6	7	8	9	10
11	12	13	14	15	16	17
18	19	20	21	22	23	24
25	26	27	28	29	30	31

September '24						
Su	M	Tu	W	Th	F	Sa
1	2	3	4	5	6	7
8	9	10	11	12	13	14
15	16	17	18	19	20	21
22	23	24	25	26	27	28
29	30					

October '24						
Su	M	Tu	W	Th	F	Sa
		1	2	3	4	5
6	7	8	9	10	11	12
13	14	15	16	17	18	19
20	21	22	23	24	25	26
27	28	29	30	31		

- First & Last Day
- PD Days: No School for Students
- No School for Students and Staff
- SLCs - No School for Students
- Family Visits

November '24						
Su	M	Tu	W	Th	F	Sa
					1	2
3	4	5	6	7	8	9
10	11	12	13	14	15	16
17	18	19	20	21	22	23
24	25	26	27	28	29	30

December '24						
Su	M	Tu	W	Th	F	Sa
1	2	3	4	5	6	7
8	9	10	11	12	13	14
15	16	17	18	19	20	21
22	23	24	25	26	27	28
29	30	31				

January '25						
Su	M	Tu	W	Th	F	Sa
			1	2	3	4
5	6	7	8	9	10	11
12	13	14	15	16	17	18
19	20	21	22	23	24	25
26	27	28	29	30	31	

M, Tu, Th, F Daily Schedule:  
8:00 a.m. - 3:25 p.m.

Wednesday Early Release:  
8:00 a.m. - 2:00 p.m.

February '25						
Su	M	Tu	W	Th	F	Sa
						1
2	3	4	5	6	7	8
9	10	11	12	13	14	15
16	17	18	19	20	21	22
23	24	25	26	27	28	

March '25						
Su	M	Tu	W	Th	F	Sa
						1
2	3	4	5	6	7	8
9	10	11	12	13	14	15
16	17	18	19	20	21	22
23	24	25	26	27	28	29
30	31					

April '25						
Su	M	Tu	W	Th	F	Sa
		1	2	3	4	5
6	7	8	9	10	11	12
13	14	15	16	17	18	19
20	21	22	23	24	25	26
27	28	29	30			

May '25						
Su	M	Tu	W	Th	F	Sa
				1	2	3
4	5	6	7	8	9	10
11	12	13	14	15	16	17
18	19	20	21	22	23	24
25	26	27	28	29	30	31

June '25						
Su	M	Tu	W	Th	F	Sa
1	2	3	4	5	6	7
8	9	10	11	12	13	14
15	16	17	18	19	20	21
22	23	24	25	26	27	28
29	30					

July '25						
Su	M	Tu	W	Th	F	Sa
		1	2	3	4	5
6	7	8	9	10	11	12
13	14	15	16	17	18	19
20	21	22	23	24	25	26
27	28	29	30	31		