

AUGUST 1, 2024

RAMS RECAP

Renaissance Public School Academy Newsletter



Renaissance Academy

RAMS

UPCOMING EVENTS

2024-25 Open House

August 12, 2024

First Day of School

August 20, 2024

No School

August 30, 2024

September 2, 2023



Hello RPSA Families!

We are so excited to be gearing up for another great school year! Our team has been hard at work getting the building ready for the start of the year. We loved seeing so many of you at our family events throughout the summer!

If you are not already following us on Facebook, we highly recommend you check it out. We share lots of fun updates throughout the year as students work at school and project events take place. We will be posting updates regarding back to school information there as well. You can find us at "Renaissance Public School Academy-Mount Pleasant".

We have a few new faces at RPSA this year and they are all so excited to meet you! Our full staff will be at Open House on the 12th to say hi and celebrate the start of another exciting year together.

If there is anything we can support you with as your family is preparing for the return to school please let us know. We are looking forward to a great year with each of our students and families!

With RAMS Pride,
The RPSA Leadership Team

RENAISSANCE PUBLIC
SCHOOL ACADEMY PRESENTS

BACK TO SCHOOL BASH

AUGUST 12, 2024
12:00-6:00

WHAT TO EXPECT

- ★ VISIT YOUR CLASSROOM AND TEACHER
- ★ DROP OFF SUPPLIES
- ★ TOUR THE BUILDING AND SEE ALL STAFF
- ★ VISIT INFORMATIONAL TABLES

SPECIAL GUESTS

**SWEET TREATS ICE CREAM
TRUCK ON SITE**

All students will be given a \$1 off coupon



Free Breakfast and Lunch!

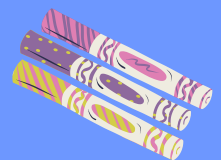
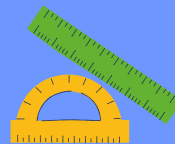
The State of Michigan has included funding for food service programs as part of the School Aid Package in the MI budget. As a result, all K-12 students in the state will receive FREE breakfast and lunch this school year.

All families will still need to complete the lunch application that will come home during the first week of school. This impacts funding we receive for grant initiatives.



School Supplies

We know how much fun it can be to shop for school supplies as part of the Back to School season. Below are suggested supply lists for each grade level. However, we will ensure every student has access to the supplies they need in their classroom, so please purchase and provide only what your family is comfortable with.



Renaissance Public School Academy
Supply List for 2024-2025

Kindergarten

| ITEM | AMOUNT |
|--|--------|
| Crayola Crayons (24 pack) | 2 |
| Crayola Washable Markers - Thick (10 pack) | 3 |
| Crayola Colored Pencils (12 pack) | 3 |
| Ticonderoga #2 Pencils (12 pack) | 1 |
| Elmer's Glue Sticks | 4 |
| Watercolor Paints Tray | 1 |
| Playdoh (4 pack) | 1 |
| Tennis Shoes/Gym Shoes - kept in locker | 1 |
| Extra Set of Clothes - kept in locker | 1 |
| Reusable Water bottle | 1 |
| Backpack | 1 |

- **Kindergarten** families only need to label the following student items: gym shoes, water bottle, lunch box, and backpack.
- **Optional additional items for the classrooms:** Band-aids, Tissues, Clorox Wipes,

Voyagers Grades 1-2

| Item: | Quantity: |
|---|-----------------|
| Backpack | 1 |
| Sturdy 2 pocket folder (1st grade only) | 4 |
| Tennis Shoes/Gym Shoes | 1 |
| Extra Set of Clothes - kept in cubby | 1 |
| Earbuds/Headphones (wired only) | 1 |
| Reusable Water bottle | 1 |
| Clorox Wipes | 1 (or more) |
| Tissues | 1 box (or more) |

- **Voyager families:** please don't forget to label items! (including extra set of clothes and boots)
- **Optional Items for classrooms:** Ziploc Bags (any size), gluesticks, Band-aids, Tape (scotch, packing, painters)
- **Optional Non-perishable Classroom Snacks to share:** Examples: Goldfish Crackers, Cheese-its, Fruit snacks, Granola Bars, etc. THANK YOU!!!

Grades 3-4

| | |
|---------------------------------|---|
| Backpack | 1 |
| Sturdy Folder (2 pocket) | 1 |
| Tennis Shoes/Gym Shoes | 1 |
| Earbuds/Headphones (wired only) | 1 |
| Reusable Water bottle | 1 |

Additional Items for Community Use: scissors, colored pencils, pencils, black expo markers, highlighters, wide-ruled notebook paper

Classroom Wishlist: gallon ziplock bags, bandaids, tissues, clorox wipes, paper towels, sharpies, colorful dry erase markers, individually packaged dry snacks

Grades 5-6

| | Trailblazers (Grades 5-6) |
|-------------------------------------|--------------------------------------|
| School Supply box | 1 |
| Sturdy Folder (2 pocket with holes) | 1 |
| 1 Subject Notebook | 1 |
| #2 Pencils | 1 package |
| Glue Sticks | 2 |
| Pencil Top Erasers | 1 package |
| Highlighters | 2 |
| Tennis Shoes/Gym Shoes | 1 |
| Earbuds (wired) | 1 |
| Reusable Water Bottle | 1 |

- **Please label all personal items with the student's name.**
- **We have pencils, markers, colored pencils, notebook paper, scissors, and glue sticks as community supplies in bins in our classrooms. If student's would like to buy and keep their own items in their supply box for personal use, they are welcome to, but it is not necessary.**
- **Optional Items for classroom donations for community use:** #2 pencils, dry erase markers (thick and thin), washable markers, colored pencils, tissues, clorox wipes, classroom snacks

Grades 7-8

| Middle School (Grades 7-8) | Quantity |
|---|-----------|
| School Supply box | 1 |
| Sturdy Folder (2 pocket) (for subject organization) One each blue, yellow, red, green, orange | 5 total |
| Pens (black or blue) | 1 package |
| #2 Pencils | 1 package |
| Pencil Top Erasers | 1 package |
| Highlighters (any color) | 1 package |
| 1 Subject Notebook One each blue, yellow, red, green | 4 total |
| Tennis Shoes/Gym Shoes (should only be worn and used in the gym) | 1 |
| Wired Headphones (wireless earbuds are no longer permitted) | 1 |
| Reusable Water Bottle | 1 |

- Please label all personal items with the student's name.
- We have markers, colored pencils, notebook paper, scissors, and glue sticks as community supplies in bins in our classrooms. If student's would like to buy and keep their own items in their supply box for personal use, they are welcome to, but it is not necessary.
- **Optional** Items for classroom **donations** for community use: Ziploc Bags (any size), Band-aids, Tissues, Clorox Wipes, Tape (scotch, duct, masking, packing, painters), post-it notes, and a ream of copy paper.
- We do a lot of building projects in Middle School that require lumber and supplies from Home Depot. Donating **Home Depot gift cards** would be a great way to help support the team in purchasing these materials as we need them!



ATHLETICS ANNOUNCEMENT:

Registration in FinalForms is a requirement for all student athletes at Renaissance Academy. Information must be fully completed, and this includes uploading a completed physical for the current athletics year. In Michigan, this must be dated April 16 or later of the current year.

Date to Remember:

- Registration opens on August 1st.
- Registration Link is on the athletics page of our school's website.

Reach out to Mr. McCausey if you have any questions. Thank you.

dmccausey@renaissancepsa.com

The logo for FinalForms, featuring the word "FINAL" in a bold, black, sans-serif font, followed by "FORMS" in a similar font. A red checkmark is superimposed over the letter "O" in "FORMS".

FINALFORMS

The Cross Country Summer Running Schedule is posted on the website! If you're planning on running this fall, please try to attend the summer sessions. Coach Snyder is looking forward to seeing you there.

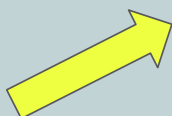
Girls Volleyball & Boys/Girls Cross Country Informational Meeting



Tuesday, August 20 5:15pm -

Renaissance Gymnasium

Student Athletes (5th through 8th grade) that are interested in playing volleyball or running cross country, and their families, should attend this meeting. Registration **MUST** be completed in FinalForms prior to the **1st scheduled event**; this includes uploading the completed physical into FinalForms, and fees paid in the office.



Come to the meeting on August 20 to find out about volleyball tryouts, and meet your coaches! The FinalForms registration link is posted on the website!

Do not wait to get your physical taken care of.

If you have any questions, contact Mr. McCausey at dmccausey@renaissancepsa.com



RPSA Cross Country

- Open to All 5th-8th Grade Boys & Girls
- No tryouts, just come to run!
- Summer Running Schedule:

8/12 (9:15 to 10:30am)

8/13 (6:45 to 8:00pm)

8/14 (6:45 to 8:00pm)

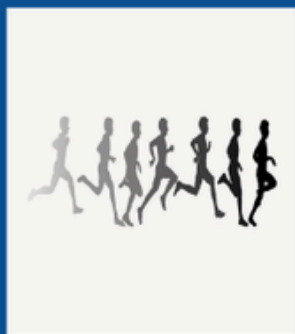
8/16 (7:45 to 9:00am)

8/19 (6:00 to 7:15pm)

8/20 (6:00 to 7:15pm)

8/22 (6:00 to 7:15pm)

8/23 (6:00 to 7:15pm)



- Registration in FinalForms opens on August 1st.
- The FinalForms registration link can be found by going to the athletics webpage.
- The Cross Country Informational Meeting will take place on 8/20 at 5:15pm in the RPSA Gymnasium.
- Reach out to Mr. McCausey with any questions.

Renaissance PSA 2024-2025 Calendar

| August '24 | | | | | | |
|------------|----|----|----|----|----|----|
| Su | M | Tu | W | Th | F | Sa |
| | | | | 1 | 2 | 3 |
| 4 | 5 | 6 | 7 | 8 | 9 | 10 |
| 11 | 12 | 13 | 14 | 15 | 16 | 17 |
| 18 | 19 | 20 | 21 | 22 | 23 | 24 |
| 25 | 26 | 27 | 28 | 29 | 30 | 31 |

| September '24 | | | | | | |
|---------------|----|----|----|----|----|----|
| Su | M | Tu | W | Th | F | Sa |
| 1 | 2 | 3 | 4 | 5 | 6 | 7 |
| 8 | 9 | 10 | 11 | 12 | 13 | 14 |
| 15 | 16 | 17 | 18 | 19 | 20 | 21 |
| 22 | 23 | 24 | 25 | 26 | 27 | 28 |
| 29 | 30 | | | | | |

| October '24 | | | | | | |
|-------------|----|----|----|----|----|----|
| Su | M | Tu | W | Th | F | Sa |
| | | 1 | 2 | 3 | 4 | 5 |
| 6 | 7 | 8 | 9 | 10 | 11 | 12 |
| 13 | 14 | 15 | 16 | 17 | 18 | 19 |
| 20 | 21 | 22 | 23 | 24 | 25 | 26 |
| 27 | 28 | 29 | 30 | 31 | | |

| November '24 | | | | | | |
|--------------|----|----|----|----|----|----|
| Su | M | Tu | W | Th | F | Sa |
| | | | | | 1 | 2 |
| 3 | 4 | 5 | 6 | 7 | 8 | 9 |
| 10 | 11 | 12 | 13 | 14 | 15 | 16 |
| 17 | 18 | 19 | 20 | 21 | 22 | 23 |
| 24 | 25 | 26 | 27 | 28 | 29 | 30 |

| December '24 | | | | | | |
|--------------|----|----|----|----|----|----|
| Su | M | Tu | W | Th | F | Sa |
| 1 | 2 | 3 | 4 | 5 | 6 | 7 |
| 8 | 9 | 10 | 11 | 12 | 13 | 14 |
| 15 | 16 | 17 | 18 | 19 | 20 | 21 |
| 22 | 23 | 24 | 25 | 26 | 27 | 28 |
| 29 | 30 | 31 | | | | |

| January '25 | | | | | | |
|-------------|----|----|----|----|----|----|
| Su | M | Tu | W | Th | F | Sa |
| | | | 1 | 2 | 3 | 4 |
| 5 | 6 | 7 | 8 | 9 | 10 | 11 |
| 12 | 13 | 14 | 15 | 16 | 17 | 18 |
| 19 | 20 | 21 | 22 | 23 | 24 | 25 |
| 26 | 27 | 28 | 29 | 30 | 31 | |

| February '25 | | | | | | |
|--------------|----|----|----|----|----|----|
| Su | M | Tu | W | Th | F | Sa |
| | | | | | | 1 |
| 2 | 3 | 4 | 5 | 6 | 7 | 8 |
| 9 | 10 | 11 | 12 | 13 | 14 | 15 |
| 16 | 17 | 18 | 19 | 20 | 21 | 22 |
| 23 | 24 | 25 | 26 | 27 | 28 | |

| March '25 | | | | | | |
|-----------|----|----|----|----|----|----|
| Su | M | Tu | W | Th | F | Sa |
| | | | | | | 1 |
| 2 | 3 | 4 | 5 | 6 | 7 | 8 |
| 9 | 10 | 11 | 12 | 13 | 14 | 15 |
| 16 | 17 | 18 | 19 | 20 | 21 | 22 |
| 23 | 24 | 25 | 26 | 27 | 28 | 29 |
| 30 | 31 | | | | | |

| April '25 | | | | | | |
|-----------|----|----|----|----|----|----|
| Su | M | Tu | W | Th | F | Sa |
| | | 1 | 2 | 3 | 4 | 5 |
| 6 | 7 | 8 | 9 | 10 | 11 | 12 |
| 13 | 14 | 15 | 16 | 17 | 18 | 19 |
| 20 | 21 | 22 | 23 | 24 | 25 | 26 |
| 27 | 28 | 29 | 30 | | | |

| May '25 | | | | | | |
|---------|----|----|----|----|----|----|
| Su | M | Tu | W | Th | F | Sa |
| | | | | 1 | 2 | 3 |
| 4 | 5 | 6 | 7 | 8 | 9 | 10 |
| 11 | 12 | 13 | 14 | 15 | 16 | 17 |
| 18 | 19 | 20 | 21 | 22 | 23 | 24 |
| 25 | 26 | 27 | 28 | 29 | 30 | 31 |

| June '25 | | | | | | |
|----------|----|----|----|----|----|----|
| Su | M | Tu | W | Th | F | Sa |
| 1 | 2 | 3 | 4 | 5 | 6 | 7 |
| 8 | 9 | 10 | 11 | 12 | 13 | 14 |
| 15 | 16 | 17 | 18 | 19 | 20 | 21 |
| 22 | 23 | 24 | 25 | 26 | 27 | 28 |
| 29 | 30 | | | | | |

| July '25 | | | | | | |
|----------|----|----|----|----|----|----|
| Su | M | Tu | W | Th | F | Sa |
| | | 1 | 2 | 3 | 4 | 5 |
| 6 | 7 | 8 | 9 | 10 | 11 | 12 |
| 13 | 14 | 15 | 16 | 17 | 18 | 19 |
| 20 | 21 | 22 | 23 | 24 | 25 | 26 |
| 27 | 28 | 29 | 30 | 31 | | |

| |
|----------------------------------|
| First & Last Day |
| PD Days: No School for Students |
| No School for Students and Staff |
| SLCs - No School for Students |
| Family Visits |

M, Tu, Th, F Daily Schedule:
8:00 a.m. - 3:25 p.m.

Wednesday Early Release:
8:00 a.m. - 2:00 p.m.